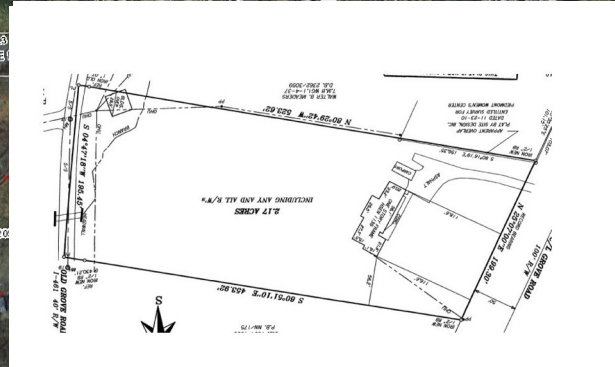
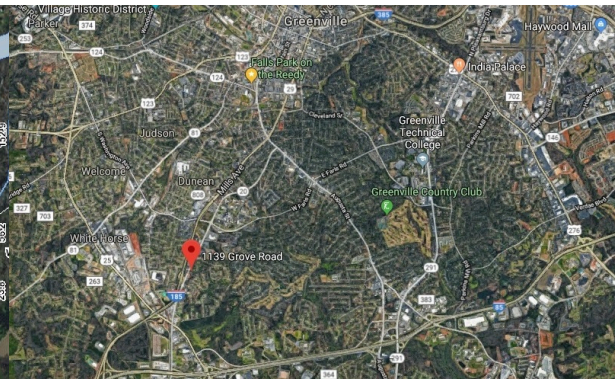
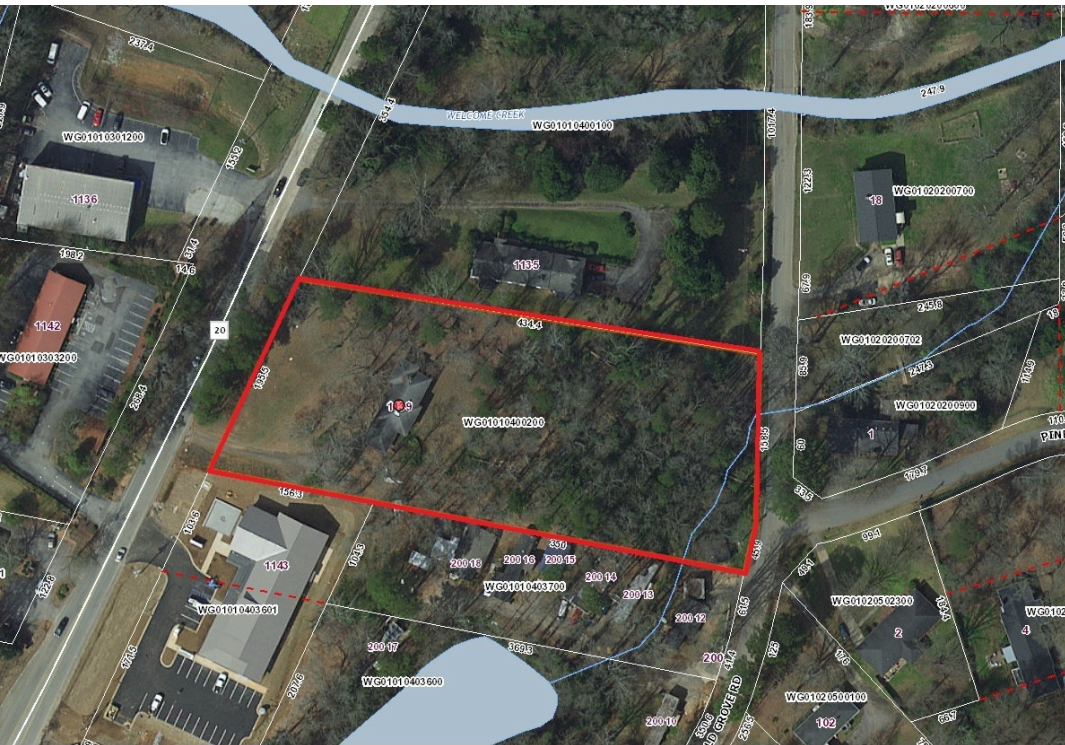


Development Land

1139 Grove Rd | Greenville, SC 29605

For Sale
\$399,000



Subdividable 2.17 acres of land located on highly traveled Grove Rd, less than a mile from Prisma Health Campus.



Matt Carter

Broker in Charge

MCarter@JoynerCommercial.com

864-313-9078

www.JoynerCommercial.com

- 2.17± Acres
- 195 feet of frontage
- 12,700 VPD on Grove Rd
- Water & Sewer Available
- Greenville County
- Tax Map#: **WG01010400200**
- Zoned OD
- Possibility for Planned Subdivision – Seller will consider selling a portion of the property.



**BERKSHIRE
HATHAWAY**
HomeServices

C. Dan Joyner, REALTORS®

SC Lic #: 5597

24 Vardry Street Ste. 401 Greenville, SC 29601

©2019 BHH Affiliates, LLC. Real Estate Brokerage Services are offered through the network member franchisees of BHH Affiliates, LLC. Most franchisees are independently owned and operated. Berkshire Hathaway HomeServices and the Berkshire Hathaway HomeServices symbol are registered service marks of HomeServices of America, Inc.® Information not verified or guaranteed. If your property is currently listed with a Broker, this is not intended as a solicitation.

COMMERCIAL DIVISION